



jordan fishwick

30 Mainwaring Drive, SK9 2QD
Offers Over £435,000



Mainwaring Drive Wilmslow SK9 2QD

Offers Over £435,000




This immaculately presented and EXTENDED two bedroom semi detached home is situated within a popular location amongst the desirable Summerfields development. The present owner has given careful consideration to its detail providing a perfect balance of accommodation. The property is within walking distance of local shops and commuter links including Wilmslow train station. The accommodation comprises in brief: Open and airy living room, beautifully refitted kitchen and a magnificent rear extension with patio door leading to the rear garden, feature wood burning stove located in a prominent position. Additionally there is access to the modern downstairs W.C. The first floor comprises: Landing with loft access, spacious double bedroom, with the second bedroom overlooking the rear garden. The family bathroom is modern and stylish with shower over the bath. Externally there is a beautifully landscaped rear garden with a Summer House and patio area ideal for entertaining. The summer house has power and lighting and offers versatility in its use, whether it be a work from home space or a separate retreat from the main property. To the front of the property is large driveway with space for multiple vehicles. The property also benefits from a covered car port. Viewings essential to fully appreciate.



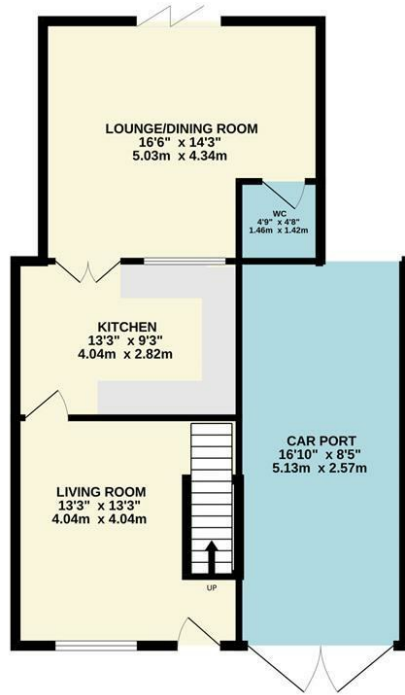
- Semi Detached Property
- Two Bedrooms
- Renovated Accommodation
- Popular Location
- Easy access to Wilmslow & local commuter links
- Off road parking
- Landscaped garden



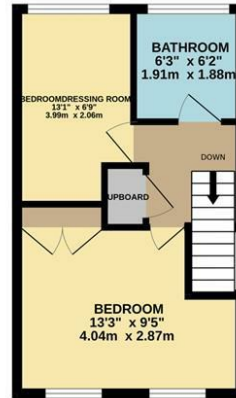
| Energy Efficiency Rating | | |
|---|---|-----------|
| | Current | Potential |
| Very energy efficient - lower running costs | | |
| (92 plus) A | | |
| (81-91) B | | 89 |
| (69-80) C | 71 | |
| (55-68) D | | |
| (39-54) E | | |
| (21-38) F | | |
| (1-20) G | | |
| Not energy efficient - higher running costs | | |
| England & Wales | EU Directive 2002/91/EC  | |



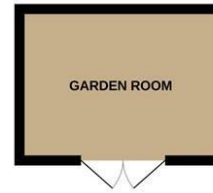
GROUND FLOOR



1ST FLOOR



2ND FLOOR



Measurements are approximate. Not to scale. Illustrative purposes only
 Made with Metropix ©2026



These particulars are believed to be accurate but they are not guaranteed and do not form a contract. Neither Jordan Fishwick nor the vendor or lessor accept any responsibility in respect of these particulars, which are not intended to be statements or representations of fact and any intending purchaser or lessee must satisfy himself by inspection or otherwise as to the correctness of each of the statements contained in these particulars. Any floorplans on this brochure are for illustrative purposes only and are not necessarily to scale.

Offices at: Chorlton, Didsbury, Disley, Hale, Glossop, Macclesfield, Manchester Deansgate, Manchester Whitworth Street, New Mills, Sale, Wilmslow and Withington

36-38 Alderley Road, Wilmslow SK91JX
 01625 532000

wilmslow@jordanfishwick.co.uk
 www.jordanfishwick.co.uk